

Head lice and how to control them with GOLDGEIST® FORTE

Behaviour and feeding habits

Head lice are wingless insects which parasitise only humans; there, they are found almost exclusively on the scalp, preferring the temple, ear and neck regions, but also the eyebrows and beard hair.

The legs of head lice are formed as grasping organs for climbing in hair. Their bodies are very pressure-resistant and withstand loads of up to 1 kg. Using their proboscis, they suck a few milligrams of blood out of the scalp 2-3 times daily. When full, the normally grey head lice appear red-brown to red. It only survives for a few days without fresh human blood; one day at 35 °C, two days at 25-30 °C, and 7 days at 10-20 °C. Eggs which are capable of hatching can still be laid after 5 days without feeding.

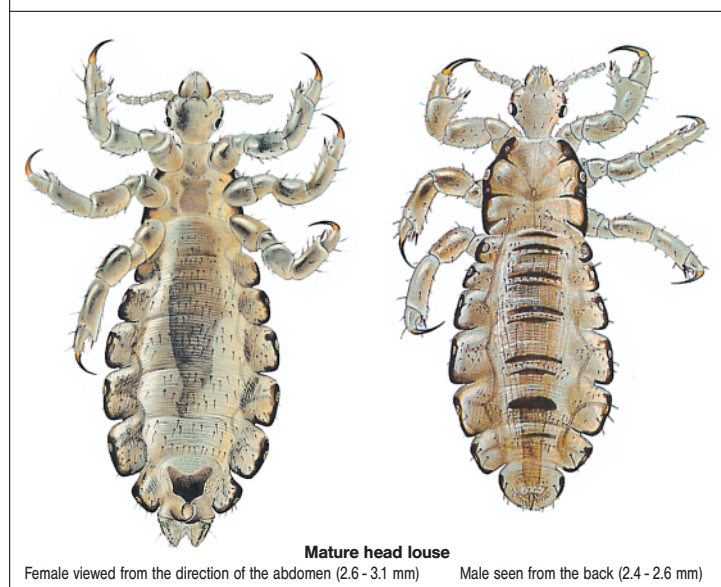
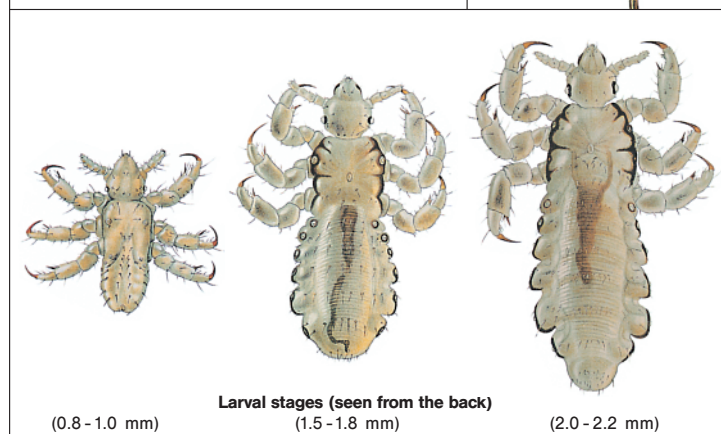
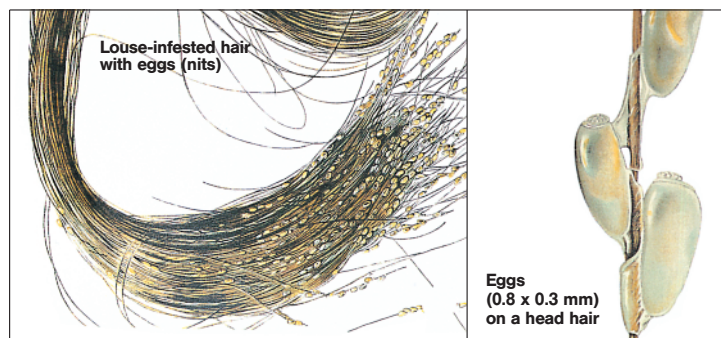
Development

Head lice prefer the temperature of approx. 28 °C in human hair. Its development slows down around 22 °C and stops almost entirely at 10 °C. No eggs are laid at temperatures below 12 °C. Female head lice usually glue the eggs (nits) to the base of the hair like pearl strings, using highly resistant adhesive secretions. The nits cannot be stripped off or washed out with water.

The larvae hatch 8 ½ days after the eggs were laid. They pass through 3 developmental stages in another 8 ½ days. 1-2 days after their third molt, male and female head lice are sexually mature, so that a new generation can develop about 3 weeks after the eggs are laid.

Males live for approx. 15 days and females for approx. 30-35 days.

Fertilised females lay up to 4 eggs daily during this period; that is, about 100 eggs in total.



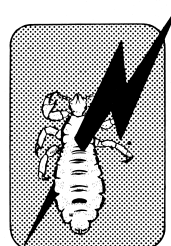
Transmission

Head lice move from one head to another during close contact. However, they can also be transmitted when switching hats and by shared pillows, blankets, combs and hair brushes. Lice may also migrate from infested hats, caps and other garments to closely adjacent garments, e.g. in schools and community facilities.

Head louse infestation (Pediculosis capitis)

Head lice are barely seen when the infestation first begins. They are only noticed due to their bites. The salivary gland secretions which penetrate the skin while the louse sucks cause severe itching. Scratching wounds in the temple, ear and neck areas indicate head louse infestation.

Pathogens from pus and dirt can enter the scratch wounds. This causes skin rash and lymph node swelling. If neglected, the hair, hair secretions and pus may mat into a foul-smelling tangle (trichoma) in which lice nest in masses.



Control with GOLDGEIST® FORTE

Based on our research and developments, head lice can be quickly controlled.

During treatment, it's important to kill off the especially resistant nits along with the lice and louse larvae to prevent larvae from hatching again.

Otherwise, additional treatments would be required. Reinfections must also be avoided. Therefore, all potential contact persons (family, friends) should be examined and if necessary, treated at the same time.

GOLDGEIST® FORTE rapidly kills lice. Control is simple and pleasant; lice, louse larvae and especially nits are destroyed with a single use.

GOLDGEIST® FORTE combines the reliability of a fast-acting contact insecticide with the conditioning properties of a shampoo. Thoroughly soak hair with the pleasantly scented liquid.

GOLDGEIST® FORTE immediately renders lice and larvae unable to move when they come into contact with the product. Everything – even the nits – is generally killed or irreversibly damaged after 30-45 minutes.

Then rinse the hair thoroughly as in normal hair care, and comb it out with a nit comb. Thorough cleaning of combs and hair brushes is recommended to prevent reinfections. Always use your own comb. Change towels, clothing and bedding and wash at 60 °C.

Lice in non-washable outerwear can be starved out by storing the garments in a sealed plastic bag for two weeks, in the warmest possible location.

Lice on garments, wigs and other small items can also be killed by air at a temperature of 45 °C with an acting time of 60 minutes.

Alternatively, carefully seal the items (clothing, blankets, toys) in bags and store in a freezer at -10 °C to -15 °C for two days.

Thoroughly clean loose hair off carpet floors, upholstered furniture, car seats, head rests etc. using a vacuum cleaner.

contains Pyrethrum

GOLDGEIST® FORTE 0,3 g/100 ml solution for use on skin.

Active substance: pyrethrum extract.

For quick and thorough destruction of lice (head lice, crabs, clothes lice) and their nits. Contains chlorocresol and a fragrance containing benzyl alcohol, cinnamic aldehyde, 3-phenylprop-2-en-1-ol, citral, citronellol, d-limonene, farnesol, geraniol, 7-hydroxy-3,7-dimethyloctanal, linalool and 3-methyl-4-(2,6,6-trimethylcyclohex-2-en-1-yl)but-3-en-2-one.

See package insert.

Prescription only.

For risks and side effects, read the package insert and ask your doctor or pharmacist.



Trade: December 2020



EDUARD GERLACH GmbH
Bäckerstrasse 4-8 · 32312 Luebbecke